



Dynamax

SapIP

Direct Dash

Quick Start Guide



QUICK START GUIDE

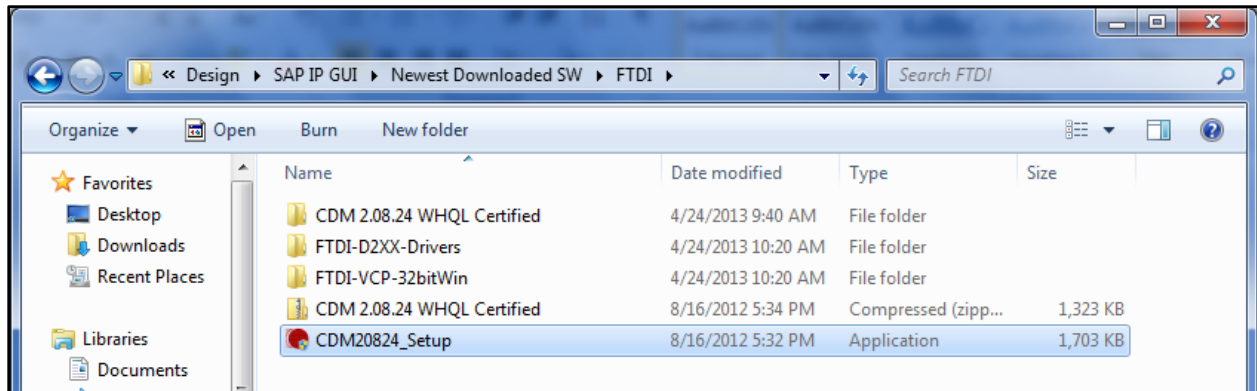
SAPIP DIRECT-DASH INSTALLATION

Table of Contents

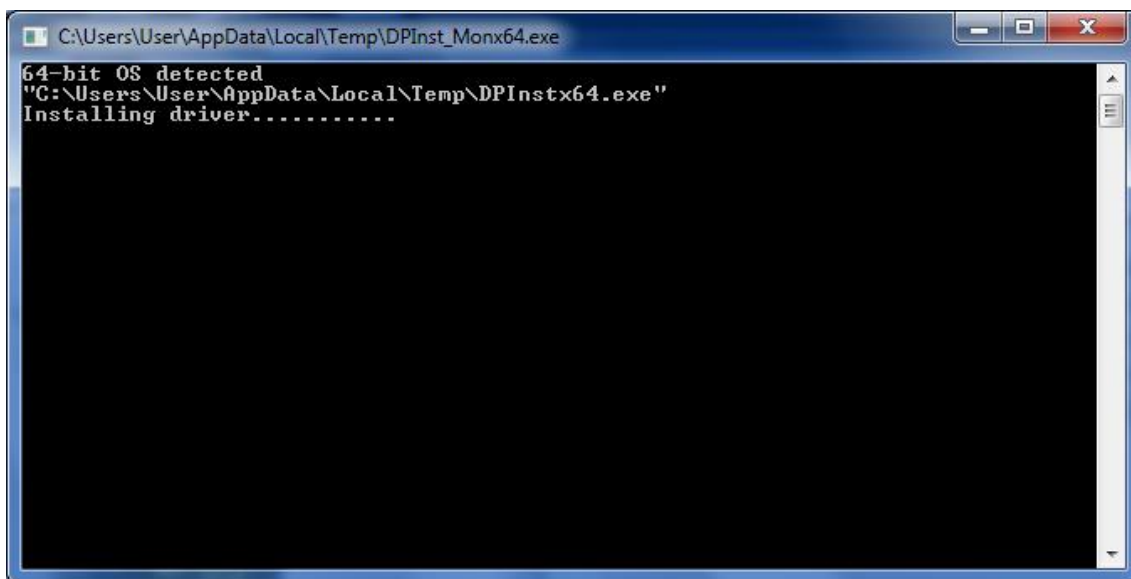
1. Install CSU cable driver for SapIP	2-3
2. Check for pre-requisite for SAPIP DIRECT-DASH install.....	2
3. Check for pre-requisite for SAPIP DIRECT-DASH install.....	2-6
4. Install SQL Program.....	7-9
5. Install SAPIP DIRECT-DASH Software.....	10-14
6. SapIP DIRECT-DASH Software Activation.....	15
7. Setup COM port and establish communication.....	16-17
8. Contents of Help File.....	18
9. References.....	18

1. Install CSU cable driver for SapIP

Insert USB memory drive into one of the available USB ports on the computer, navigate to FTDI directory and locate a file named CDM20824_setup. For Windows XP or earlier version users, double click on the file to execute. For Windows Vista, 7 and 8 users, right click on the file and select “Run as administrator” to execute.

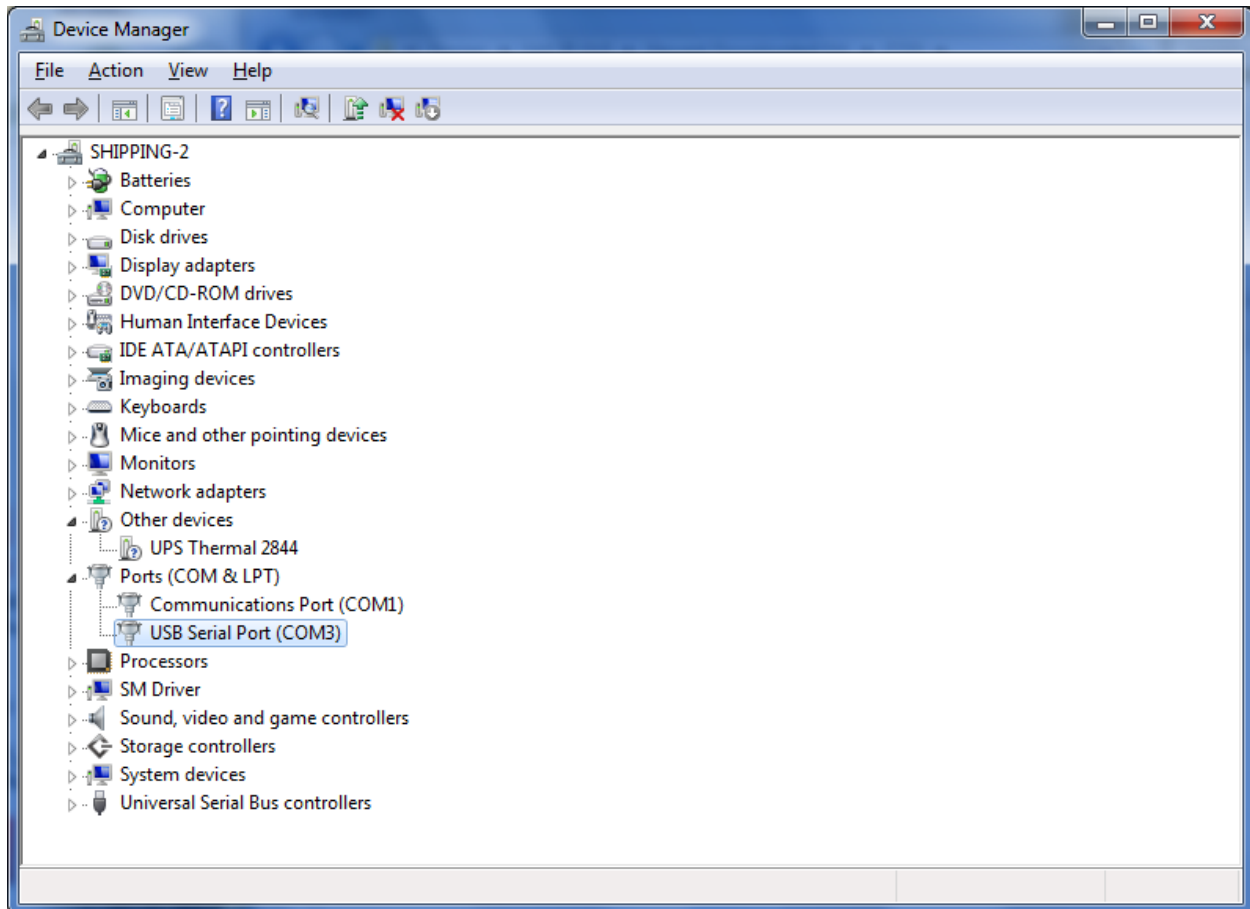


A prompt window will pop up displaying the progress of driver installation.



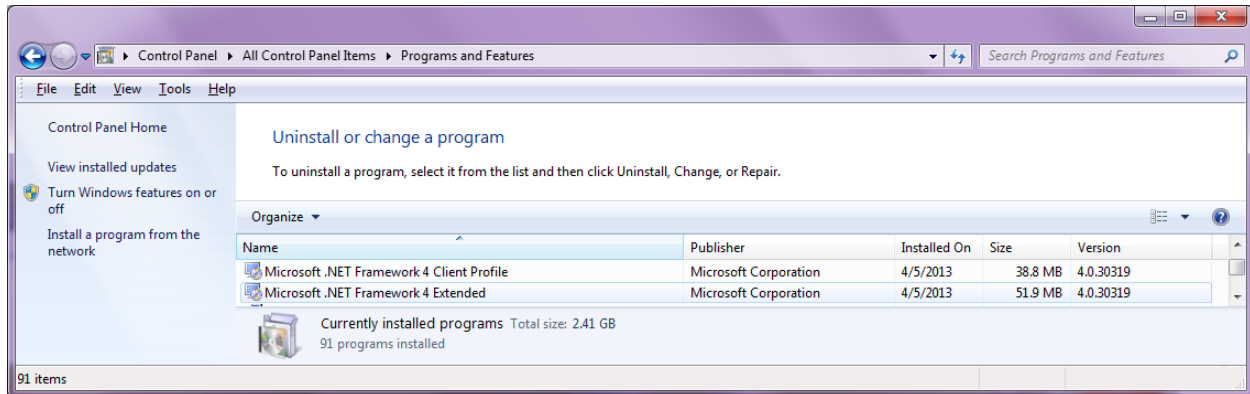
For Windows Vista and earlier OS, a “FT232R USB UART” driver will be installed automatically prior to “USB Serial Port” driver described below. If this driver has already been installed, user can proceed to the following “Serial Port” driver installation.

Once installation is completed, connect SapIP-CSU cable between SapIP and Computer. Go to “Start Menu” – “Control Panel” – “System” – “Device Manager”, verify a new USB Serial Port is generated under “Ports (COM & LPT)” category without any warning sign (⚠). COM port number may vary.



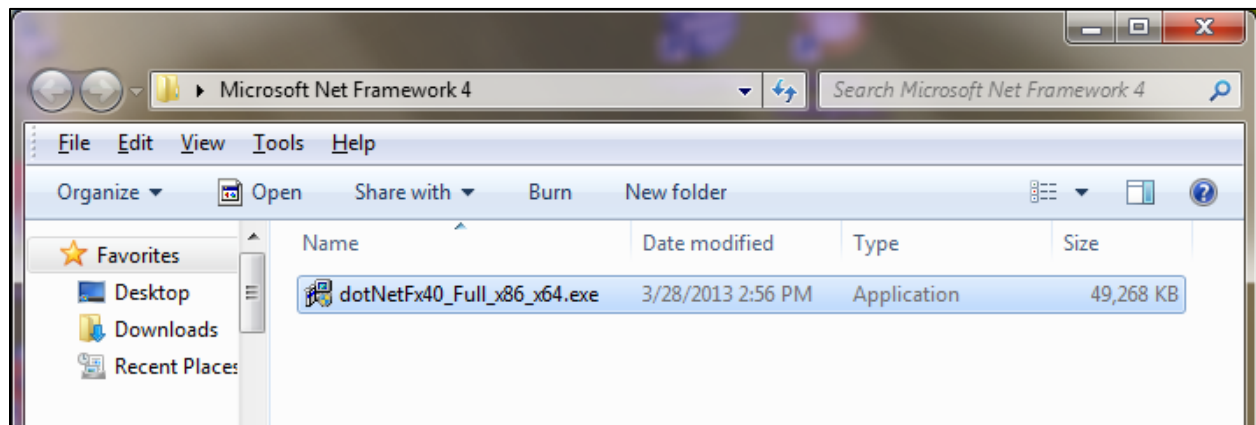
2. Check for pre-requisite for SAPIP DIRECT-DASH install

Go to “Start Menu” – “Control Panel” – “Programs and Features”, locate “Microsoft .NET Framework 4” program in the installed list. If found in the list, skip step #3 and proceed to “Install SQL Program”.

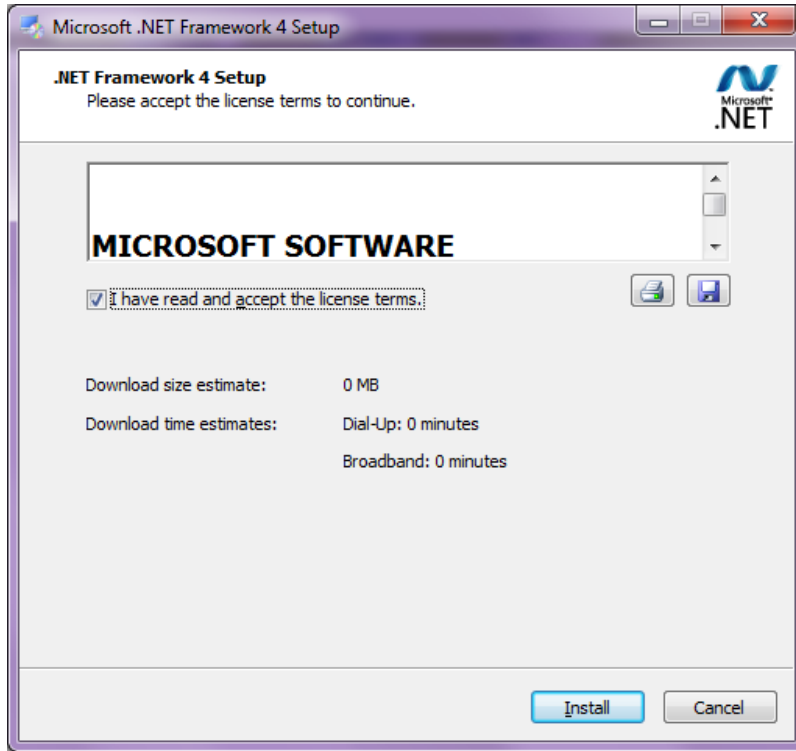


3. Install Microsoft .NET Framework 4 if not already installed

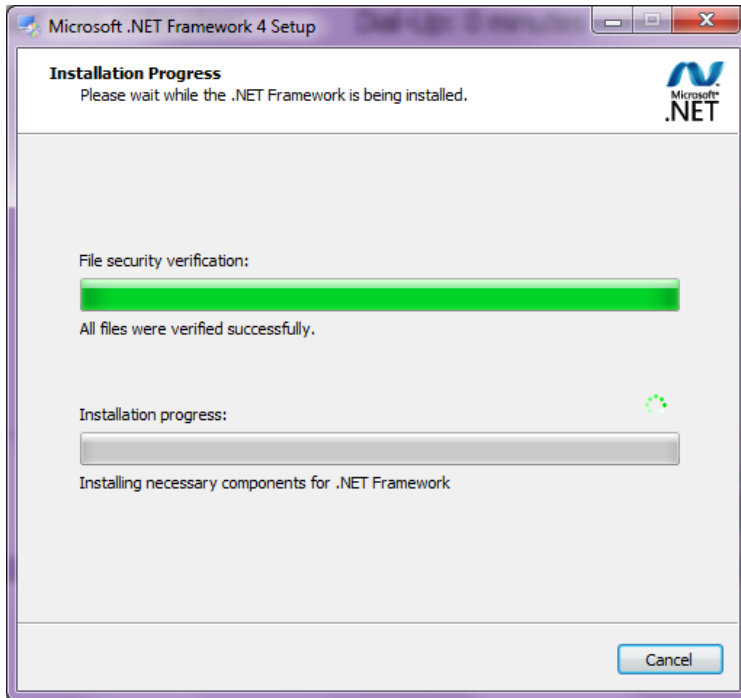
If not found, Insert USB key into one of the USB ports on the computer, go to “Microsoft NET Framework 4” folder, run the installation by double-clicking the file below.



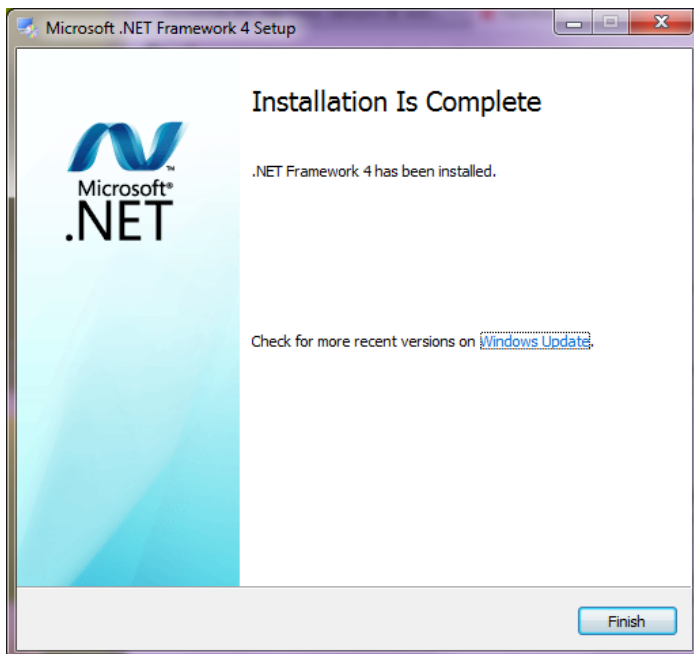
Agree to Microsoft Software Agreement by checking the box below, then click “Install” button to continue.



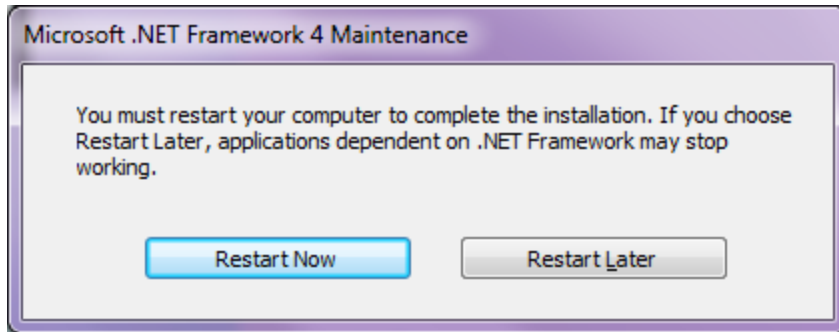
Installation will automatically proceed as shown below.



After it's done, click "Finish" button to exit.

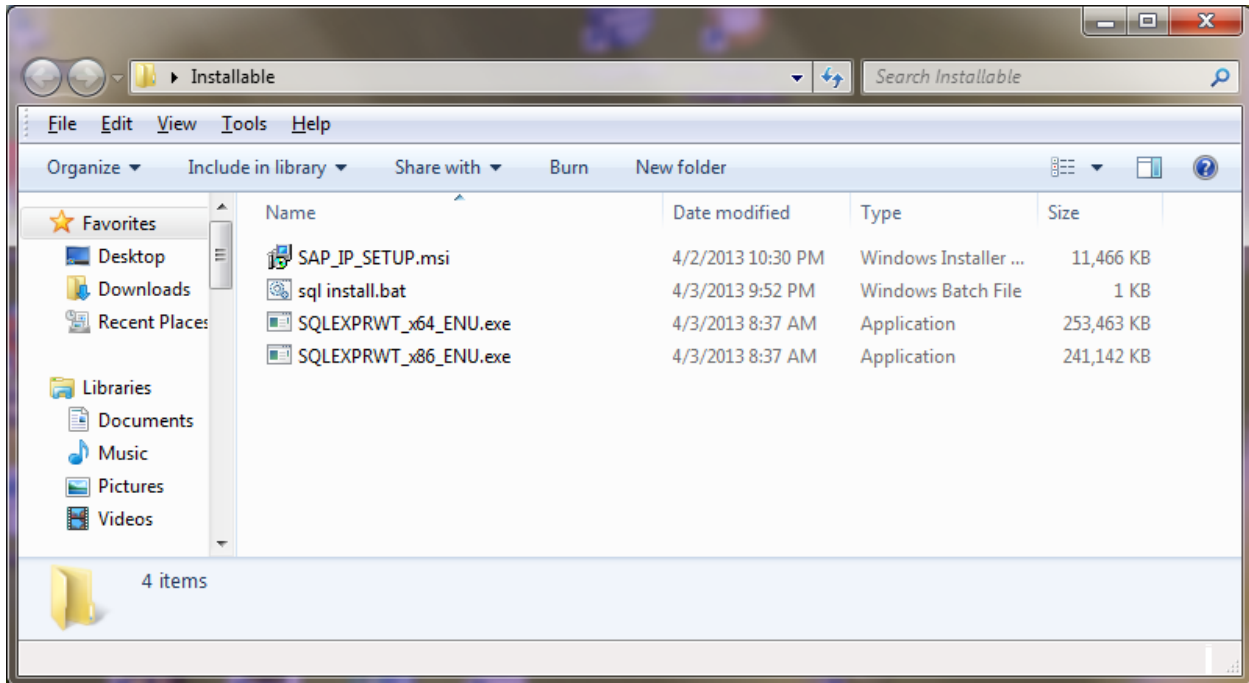


A restart of the computer is required after installing .NET Framework 4 program.

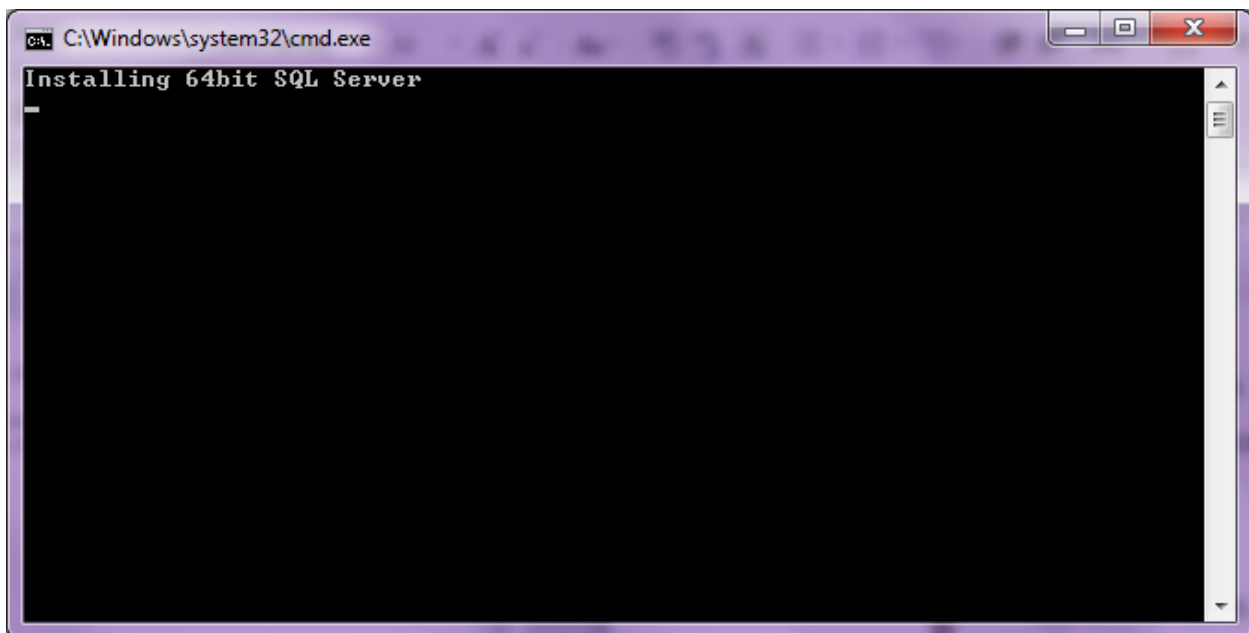


4. Install SQL Program

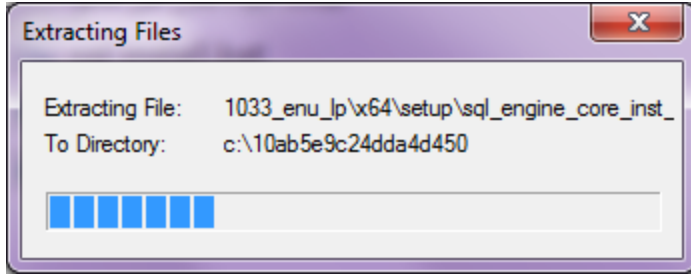
Insert USB memory drive into one of the available USB ports on the computer, go to “Installable” folder, user will see 4 files as shown below. For Windows XP or earlier version users, double-clicking “sql install.bat” file to start a full installation. For Windows Vista, 7, and 8 users, right click the “sql install.bat” file and select “Run as administrator”.



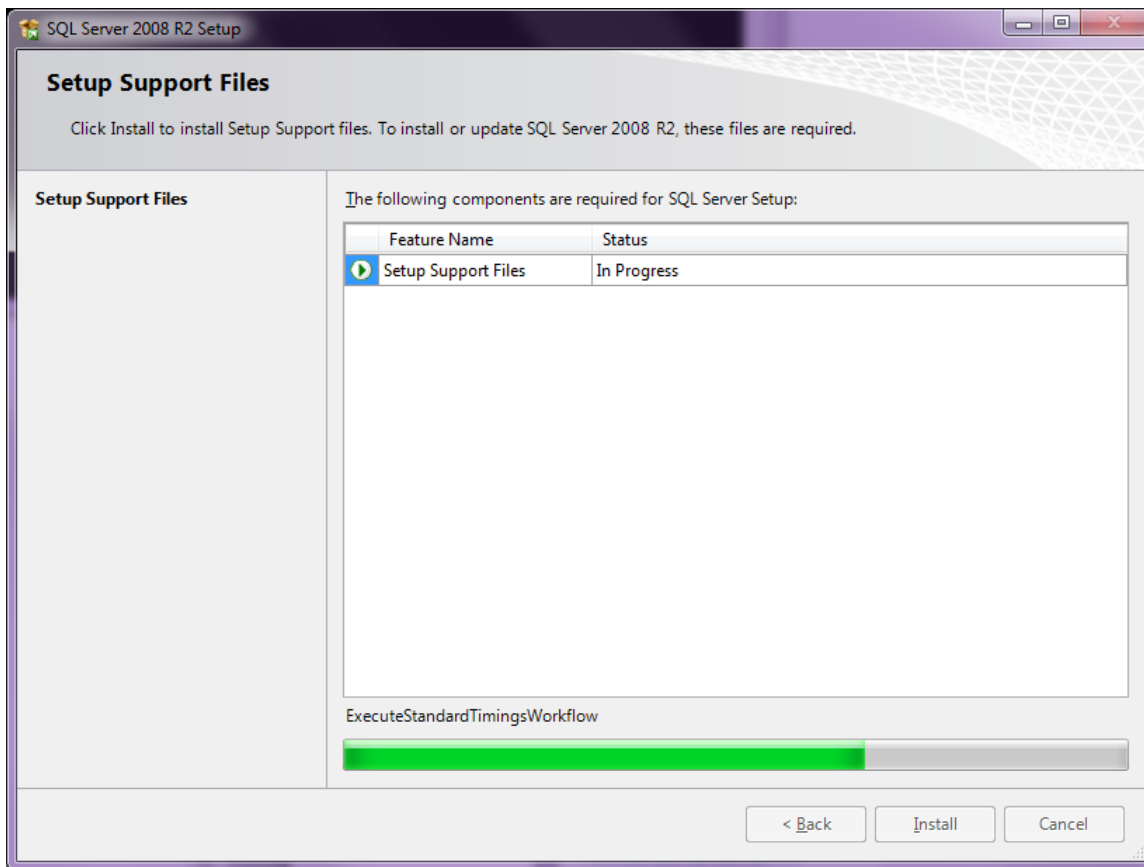
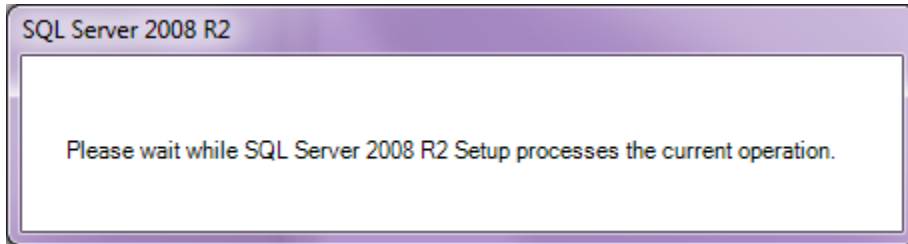
A new Command Prompt window will pop up showing you if the installation is in 32bit or 64bit (types of Windows Operating System setting), shown below.



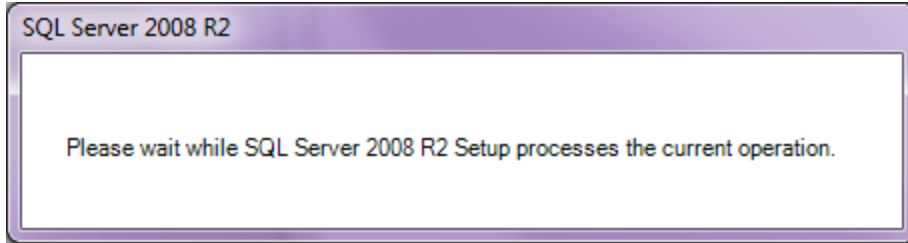
Files are being extracted in order to install SQL (a database program required to run SAPIP **DIRECT-DASH** software).



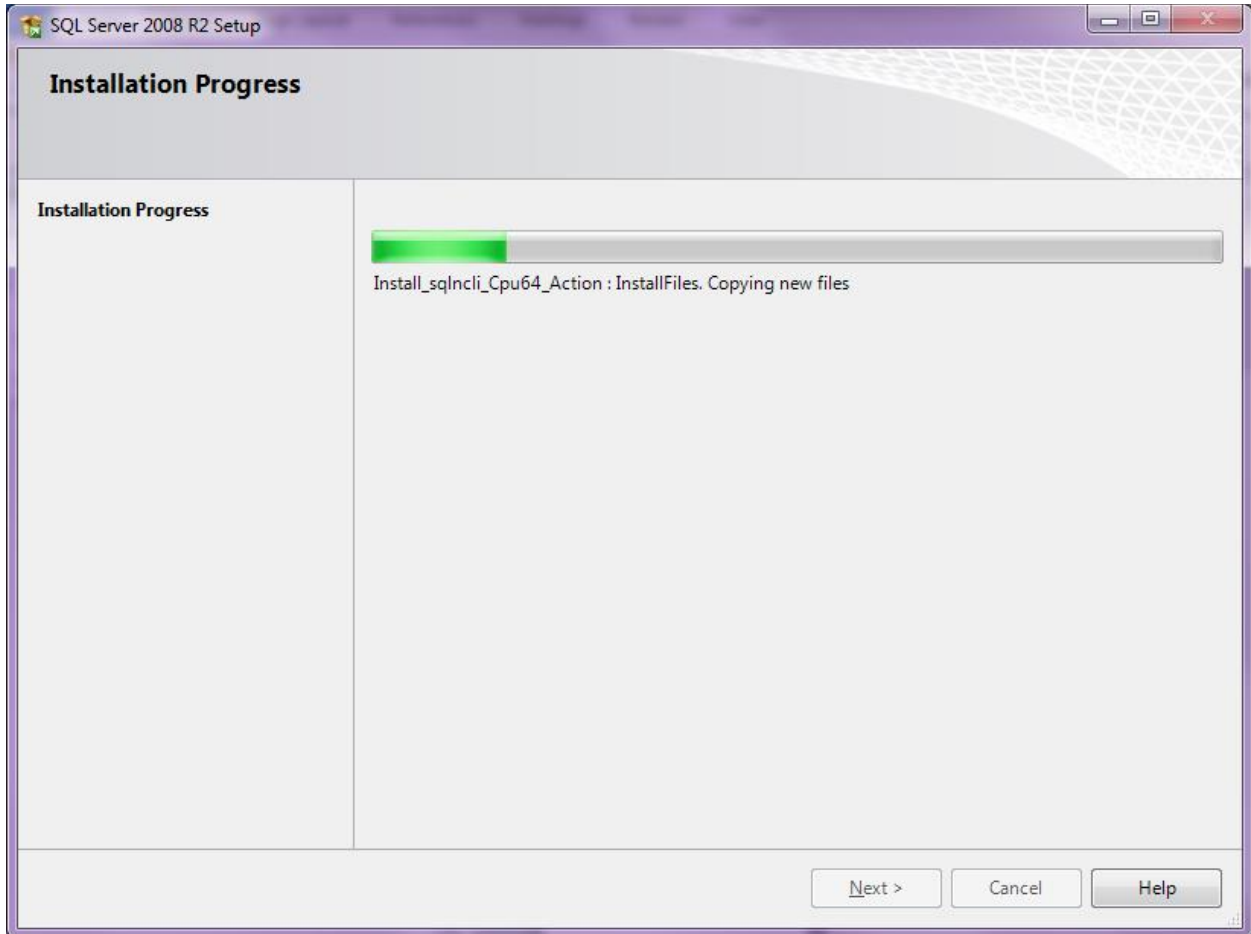
First prompt window starts installation of SQL program.



Second prompt window continues the installation of SQL program.



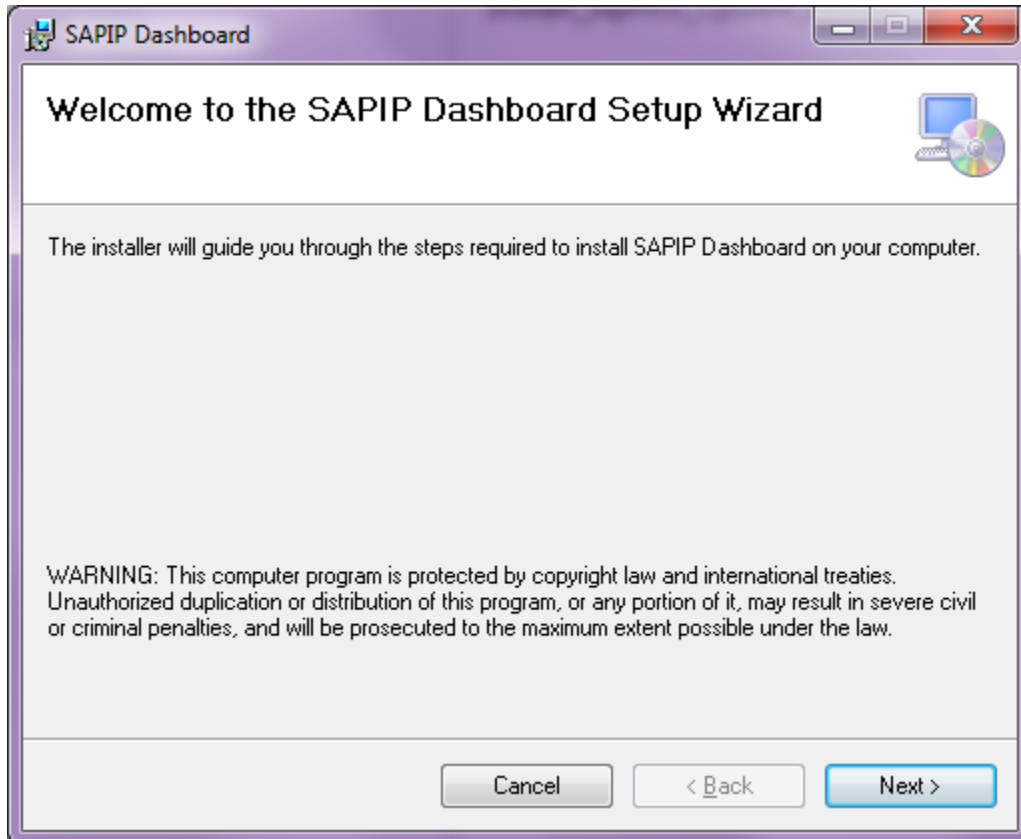
SQL program is being installed.



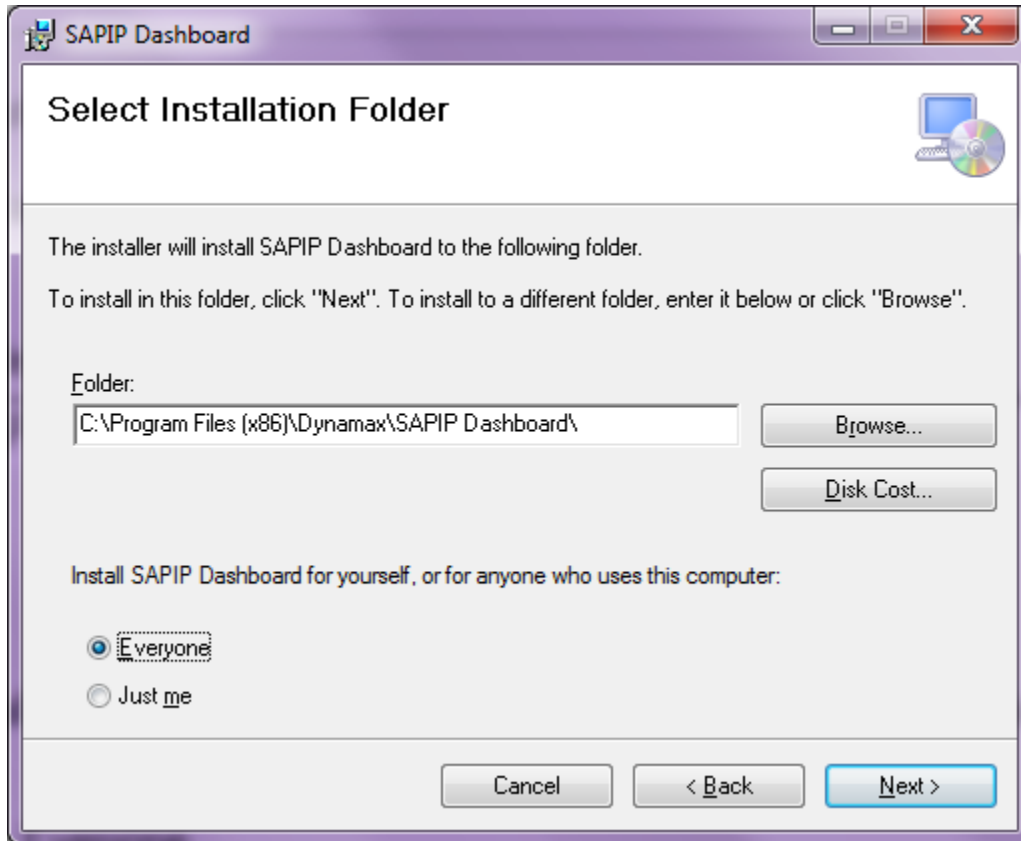
Once it's completed, installation will automatically proceed to SapIP **DIRECT-DASH** Installation screen.

5. Install SAPIP DIRECT-DASH Software

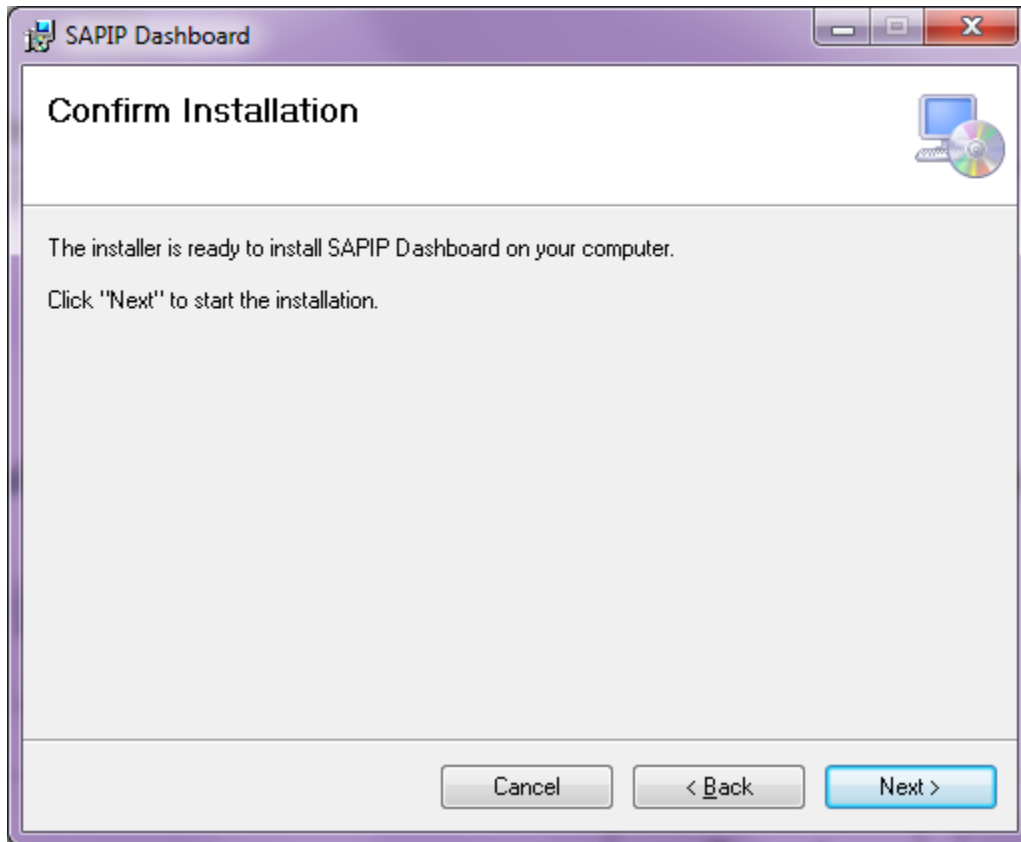
Once SQL program is successfully installed, prompt of installation for SAIP **DIRECT-DASH** will automatically initiate. Click “Next” button to proceed with this installation.



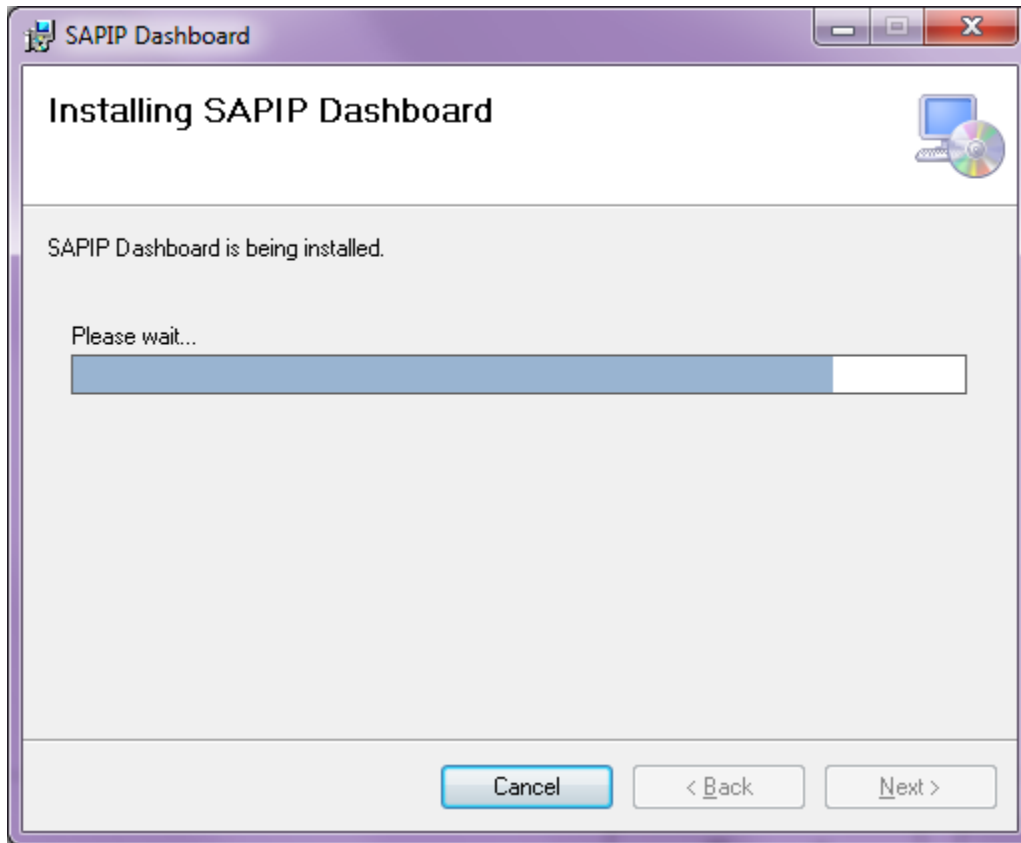
Using default location is recommended. User may change to a different location by single-clicking “Browse” button and navigate to desired folder. Choose your software sharing preferences with everyone or just the user who logged in. Single click “Next” button to continue.



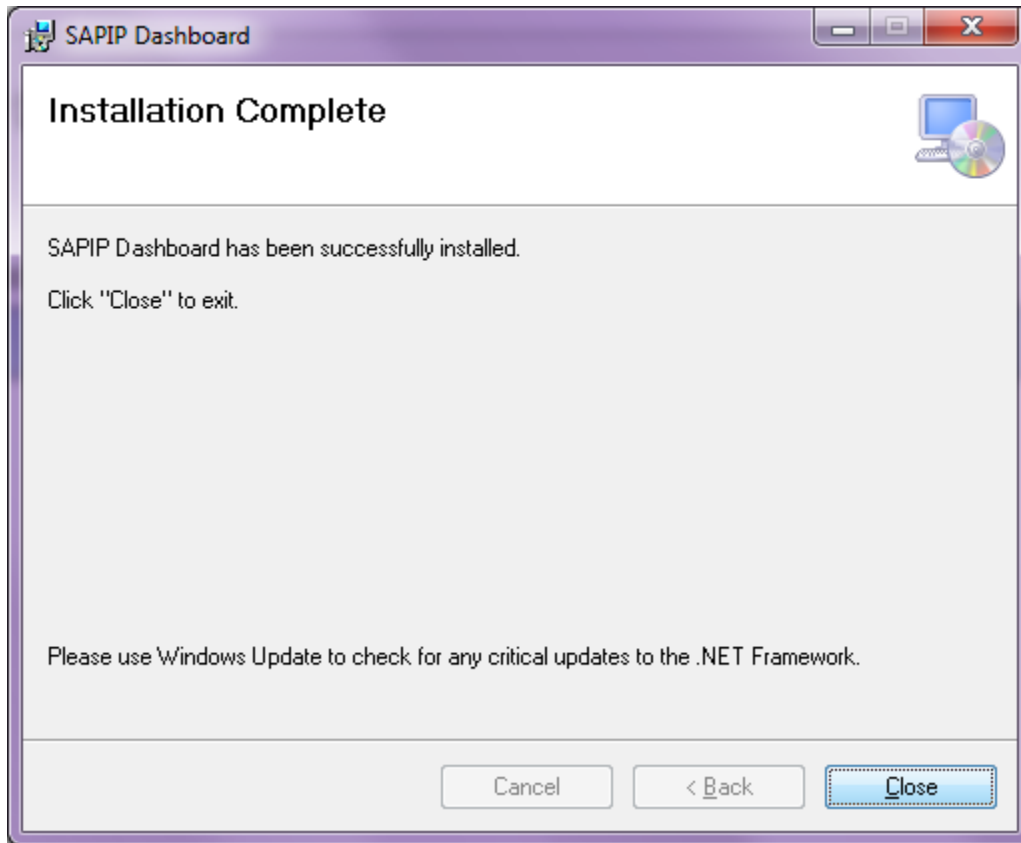
Confirmation for continue installing SAPIP **DIRECT-DASH** software.



Software installation is in progress.

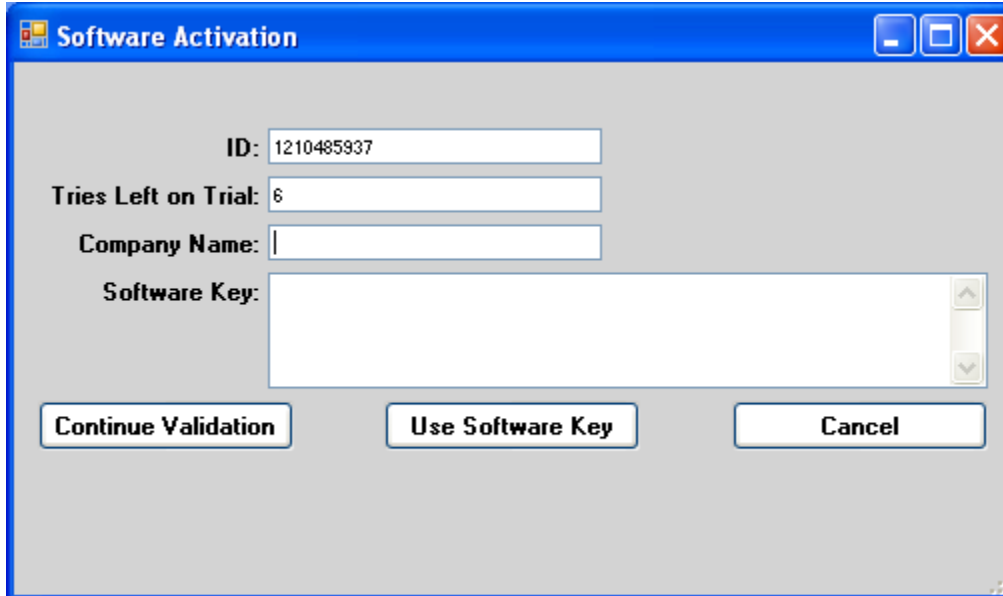


Installation is completed. Single click "Close" button to exit.



6. SapIP DIRECT-DASH Software Activation

Once all installation is completed, a “SapIP Dashboard” shortcut icon is created on desktop. Double click it will open the program (Windows Vista, 7, and 8 users right click on the icon and select “Run as administrator” to open the program).



The screenshot shows a Windows-style dialog box titled "Software Activation". It features a blue title bar with standard window controls (minimize, maximize, close). The main area is light gray and contains the following fields and buttons:

- ID:** A text box containing the value "1210485937".
- Tries Left on Trial:** A text box containing the value "6".
- Company Name:** An empty text box.
- Software Key:** A large, empty text box with a vertical scrollbar on the right side.
- Buttons:** Three buttons are located at the bottom: "Continue Validation", "Use Software Key", and "Cancel".

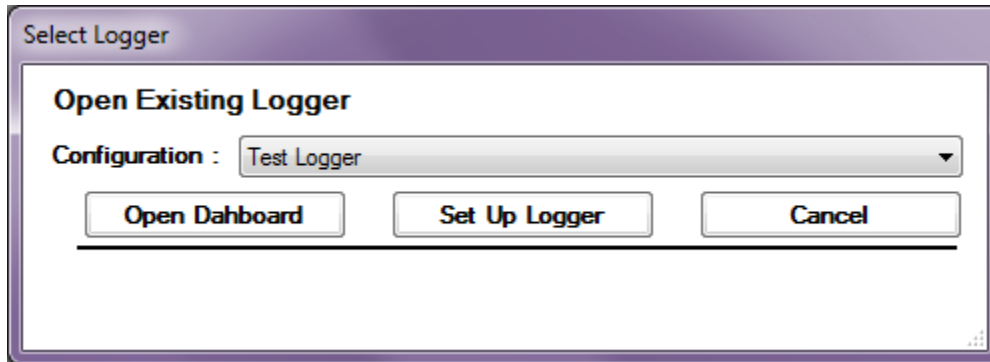
The program comes with 30 trial usages as seen at “Tries left on Trial” field above. During trial period, program provides full feature of the software. Click on “Continue Validation” button to proceed with trial access. Before trial period expires, end users need to contact Dynamax sale representatives to purchase a software key. A single software key can be used on a single computer only.

By email request to service@dynamax.com: with “ID” (sample ID shown in above image) and “Company Name” to request software key after the purchase is finalized, users will receive an email response with software key code and expiration date within one business day.

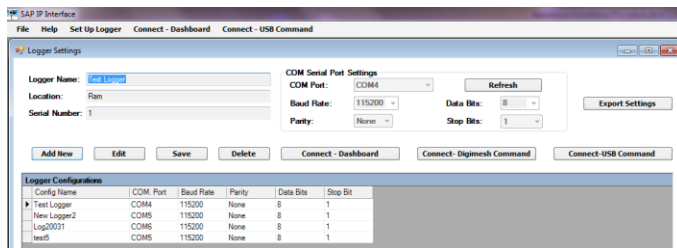
Once users acquire their unique software key, copy and paste the key code into “Software Key” field in the image above. Click “Use Software Key” button to activate.

7. Setup COM port and establish communication

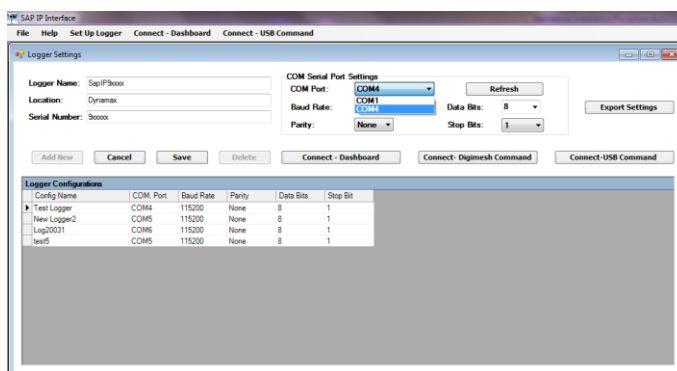
Powering up SapIP then connect USB cable between SapIP and computer first. At the start of the program, within “Select Logger” screen, click “Set Up Logger” button.



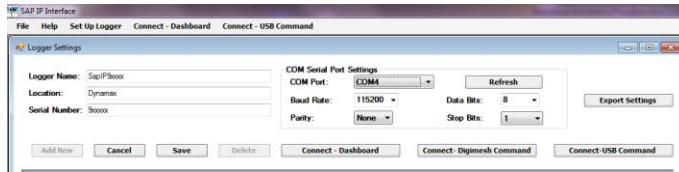
At “Logger Settings” screen, click “Add New” to set up a new logger.



After inputting logger information, click “COM Port” and select correct COM # from drop down list. If users don’t see the correct COM number in the list, click “Refresh” button to update the list. Refer to “Control Panel” – “System” – “Device Manager” – “Ports (COM & LPT)” for the correct COM #, usually a number other than “1”.

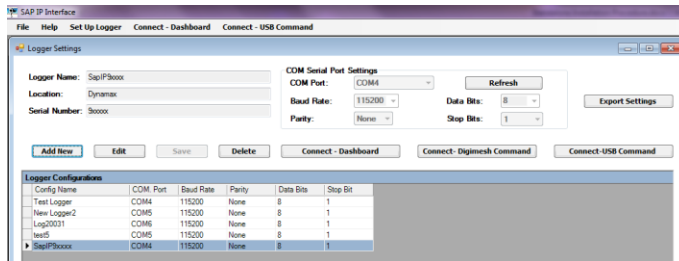


Default for SAPIP is displayed below. Or you may select “Baud Rate” - 115200, “Parity” - None, “Data Bits” - 8, and “Stop Bits” - 1. Click “Save” button to store the setting.

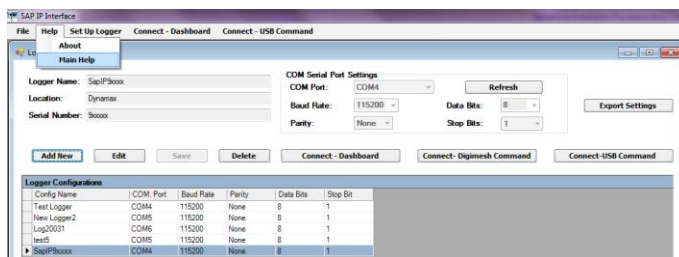


Highlight the “Logger Configuration” setting and click “Connect – Dashboard” to operate the program. If there are multiple configuration stored in the program, select the correct configuration for the corresponding Sapip connected to establish communication.

For experienced support technician, close “Logger Settings” window and navigate to “USB Command” window through menu bar at top of the program window.



For any additional information on how to use this program, go to “Help” at top of the program window and select “Main Help”.



8. Contents of Help File

- Part I. Getting Started**
- Part II. Setup SapIP to Log**
- Part III. View Collected**
- Part IV. Operate USB**
- Part V. Operate Digimesh Command Window**

9. References

All SapIP support documents are on our public FTP Server:

<ftp://ftp.dynamax.com/SapIP-Support/>

SapIP Operation Quick Start Guide:

<ftp://ftp.dynamax.com/SapIP-Support/Manuals%20-%20QSG/SapIP-QSG-Manual1.pdf>

USB Command List:

<ftp://ftp.dynamax.com/SapIP-Support/Manuals%20-%20QSG/USB%20Commands%20V116.pdf>

USB Digimesh Command List:

<ftp://ftp.dynamax.com/SapIP-Support/Manuals%20-%20QSG/USB-AT-Digimesh-Commands.pdf>

USB Driver Files:

<ftp://ftp.dynamax.com/SapIP-Support/FTDI-USB-Drivers%20Virtual%20Com/FTDI-VCP-Zip-driver.zip>